

Boutique Ship Cruises on the Majestic Mekong



The Mekong Pearl and the Mekong Sun offer friendly service in a relaxed, old-world atmosphere for 29 guests at most who enjoy local specialties in the onboard restaurant and bar service on the sundeck. The two exclusive feel-good ships travel several different routes between Luang Prabang, the Golden Triangle, and Vientiane. Cruises can be as long as 12 days and as short as 4 days, offering a maximum of flexibility.

A First-Class Experience

- Well-appointed cabins, each with large windows and balcony
- Laid-back atmosphere on board – casual clothing welcome
- Air-conditioned shuttle service between hotel and airports on first and last days
- Entrance fees, sights and excursions according to itinerary
- Tours by air-conditioned vehicles according to itinerary
- Welcome drink and a gift for each guest

Expert Staff

- Friendly and professional 16-person crew for maximum 29 travelers
- Experienced, multilingual cruise director available at all times
- Local English-speaking guides (Frenchspeaking on select departures) and service personnel
- Informative and entertaining talks on board about lands, culture and history
- Polite and professional restaurant and bar staff, serving your meals with a smile
- Traditional Asian massage

Fresh Flavours

- Daily meals according to route description, including coffee, tea, water, snacks, and fresh fruit like bananas, papaya, dragon fruit and mangosteen
- Delights of regional cuisine freshly prepared on board (vegetarian upon request)
- Bar service available on board, featuring cocktails and local drinks like Beerlao and lao-lao (rice whiskey)
- Our most unique and memorable highlight: delicious barbecue with villagers and live music on a sandbank

Everything Else

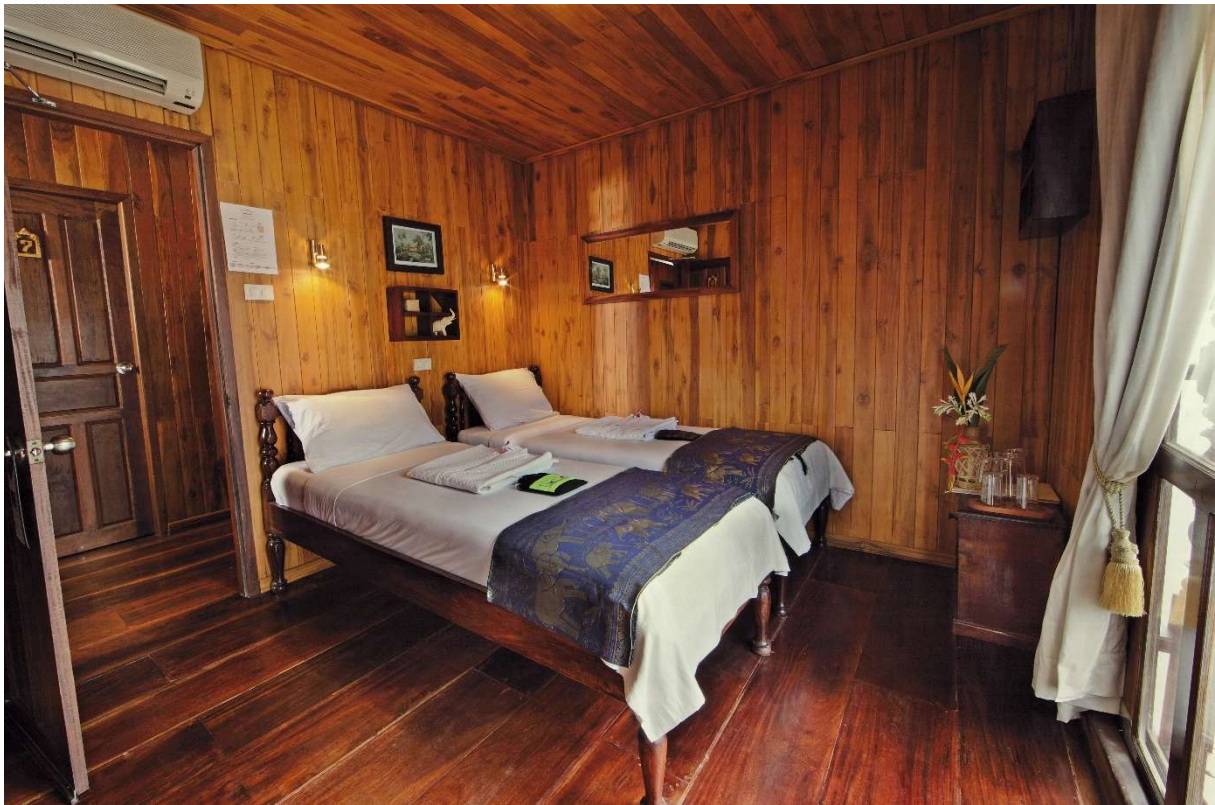
- Bathrobe and slippers for each guest
- Refreshing towelettes and drinks after excursions
- Detailed information package about the destination
- Whatever it takes to make your Mekong adventure enjoyable and pleasant!



The Mekong Sun: Your Home on an Unforgettable Journey

Classic Cabins

- 11 Classic cabins on the main deck
- Size: 129 ft²/12 m²
- 2 twin beds per cabin
- Sliding windows facing water
- French balcony
- Private bathroom, shower and air-conditioning



Superior Cabins

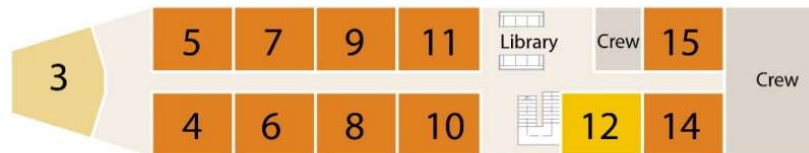
- 3 Superior cabins, 1 on the bow of the main deck and 2 on the upper deck
- Size: 194 ft²/18 m² (upper deck)
- 172 ft²/16 m² (main deck)
- 2 twin beds per cabin (exception: 1 double bed in cabin #3)
- Small private balcony (upper deck)
- Panoramic view from bow (main deck)
- Private bathroom, shower and air-conditioning



Upper Deck



Main Deck



- Classic twin cabins (4 - 11, 14, 15)
- Economy twin cabin (12)
- Superior cabins
 - 1 and 2: Twin cabins with balcony
 - 3: Double cabin with panoramic view

The Mekong Pearl: The Big Little Sister of the Mekong Sun

Classic Cabins

- 6 Classic cabins and 1 Single Classic cabin on the main deck
- Size: 129 ft²/12 m²
- 2 twin beds per cabin (excluding Single Classic)
- Sliding windows facing water
- French balcony
- Private bathroom, shower and air-conditioning

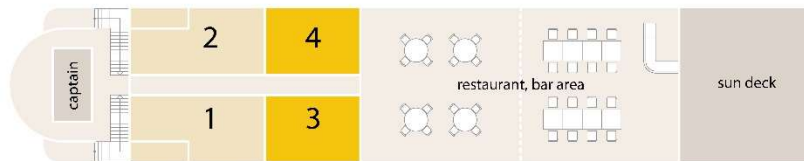


Superior/Deluxe Cabins

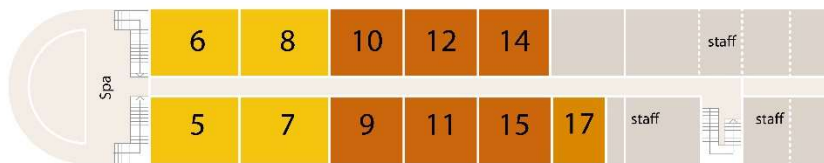
- 4 Superior cabins on the main deck; 2 Superior cabins and 2 Deluxe cabins on the upper deck
- Size: 172 ft²/16 m² (Superior) 237 ft²/22 m² (Deluxe)
- 2 twin beds per cabin
- Sliding windows facing water
- French balcony (Superior)
- Small private balcony (Deluxe)
- Private bathroom, shower and air-conditioning



Upper deck



Main deck



- Classic cabins (9 – 12, 14 – 16)
- Single cabin (17)
- Superior cabins (3 – 8)
- Deluxe cabins with private balcony (1, 2)